

Westmount Estates



Well Hall Parade, London, SE9 6SP

£1,200 PCM

A well presented ONE bedroom second floor conversion apartment. Centrally situated within close proximity of both Eltham High Street and mainline station this flat would be ideal for anybody wanting an easy commute.

Internally the property comprises of an open plan living/kitchen area, spacious bedroom with built in units, bathroom with walk-in shower unit and plenty of storage cupboards.

ENTRANCE

Walk in shower unit, low level w.c, wash hand basin, tiled flooring.



Carpeted stairs to property, sensor light.

ENTRANCE HALL

LIVING ROOM/KITCHEN



Open plan living area to kitchen, fitting kitchen with a range of eye and base unit, storage cupboard housing washing machine fridge/freezer and boiler, carpeted flooring.

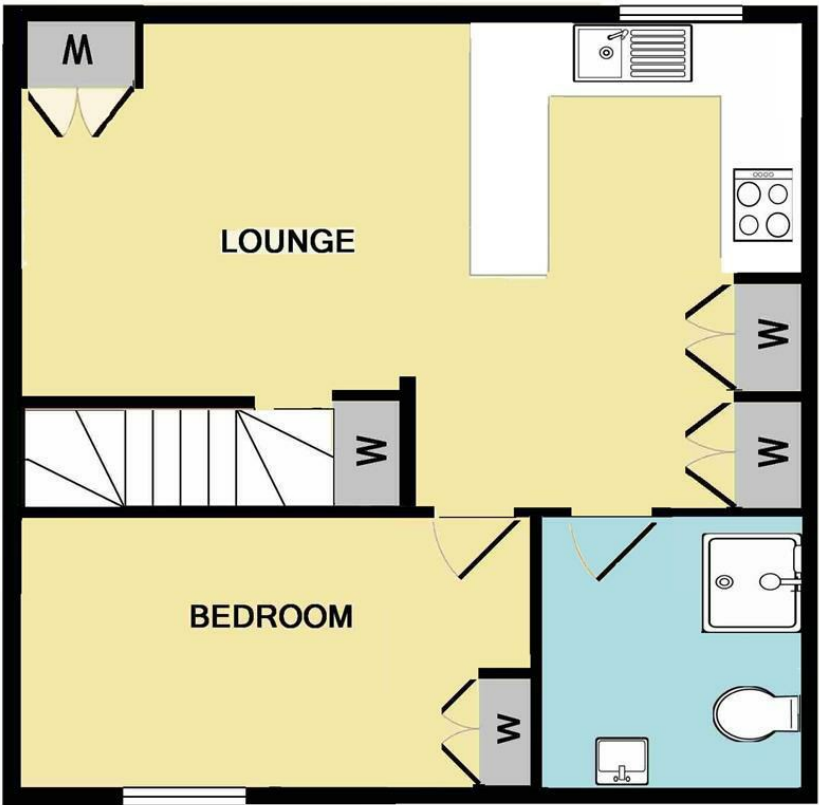
BEDROOM



Built in wardrobes, Velux window to front, carpeted flooring.

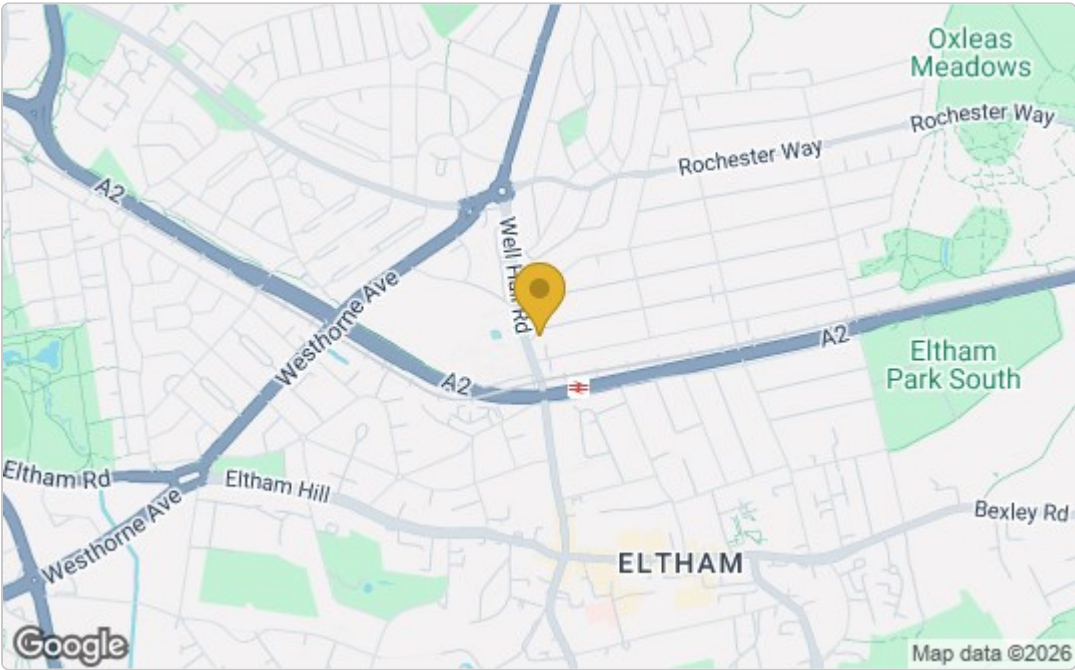
BATHROOM

Floor Plan



Not to scale. Illustrative purposes only

Area Map



These particulars, whilst believed to be accurate are set out as a general outline only for guidance and do not constitute any part of an offer or contract. Intending purchasers should not rely on them as statements of representation of fact, but must satisfy themselves by inspection or otherwise as to their accuracy. No person in this firms employment has the authority to make or give any representation or warranty in respect of the property.

Energy Efficiency Graph

